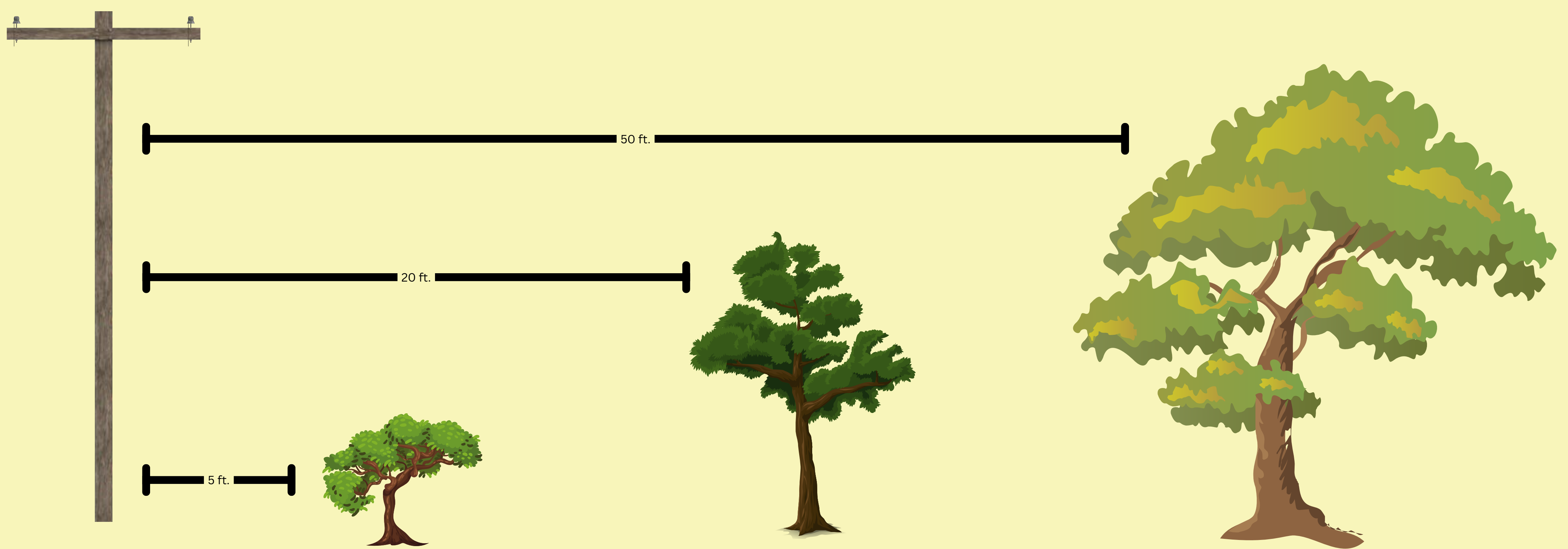


STEP 1: CHOOSING THE IDEAL PLACE FOR YOUR NEW TREE

Right Tree, Right Place

Planting large trees too close to overhead utilities can cause outages and fires.



Small Trees
Up to 20 feet tall
Plant at least 5 feet
from pole

Medium Trees
20-40 feet tall
Plant at least 20
feet from pole

Large Trees
40+ feet tall
Plant at least 50
feet from pole

PRO TIP: TO COOL YOUR HOUSE AND LOWER YOUR UTILITY BILLS, PLANT YOUR TREE ON THE WEST OR SOUTH SIDE OF YOUR HOUSE!



TREEFOLKS

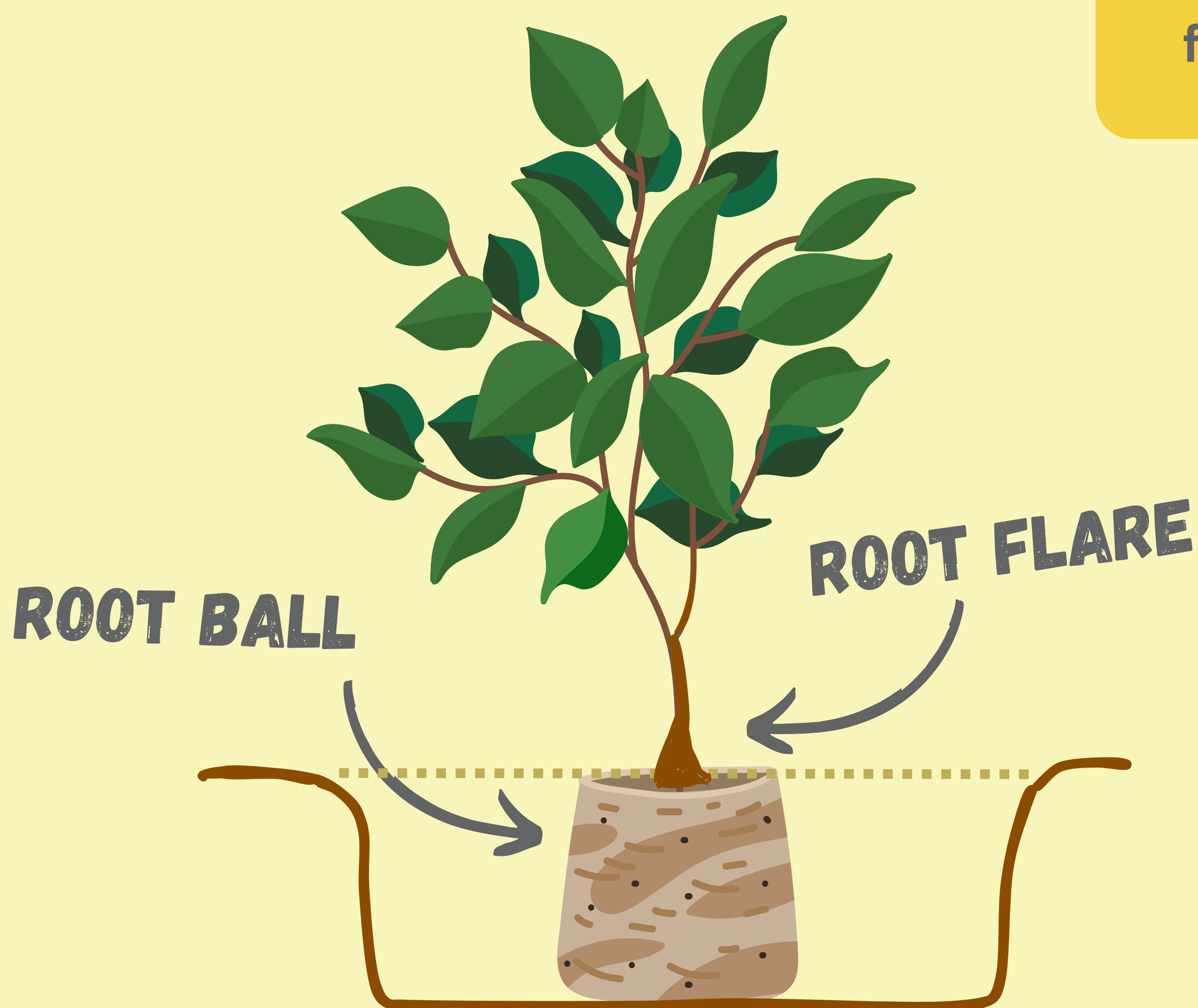
STEP 2:

DIGGING A HOLE FOR YOUR NEW TREE



Lay the tree down and slide it out of its container. Take a look at the root ball and find the root flare before you dig your hole to ensure proper planting depth.

The root flare is where the trunk expands at the tree's base just before the roots begin. You might have to remove soil from around the trunk to find it.



Dig a shallow, wide planting hole. It should be 2-3 times wider than the root ball, but only as deep as the root ball. The root flare should be visible after backfilling the hole.

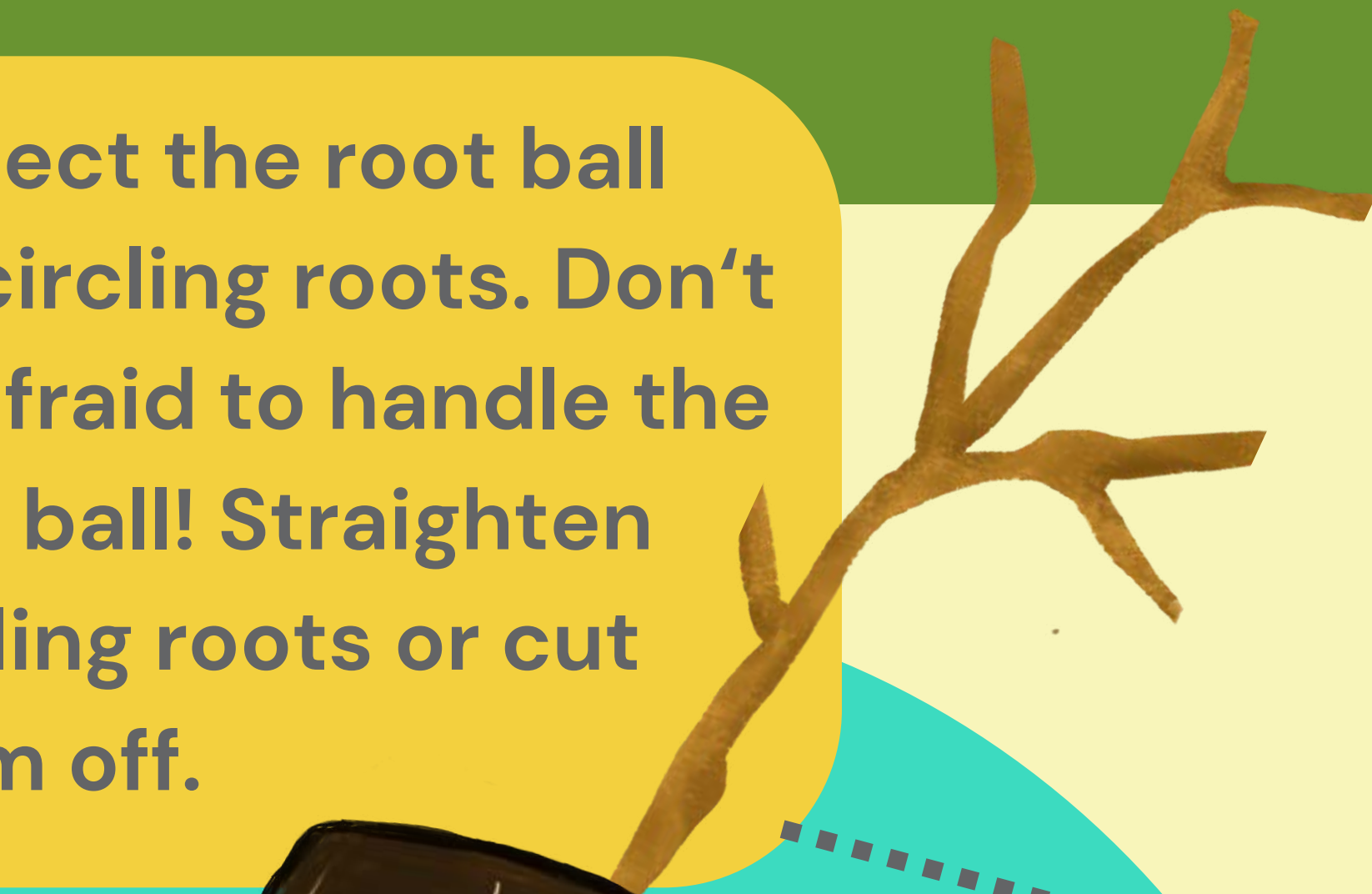
CAUTION: IF THE TREE IS PLANTED TOO DEEP, NEW ROOTS WILL HAVE DIFFICULTY DEVELOPING DUE TO A LACK OF OXYGEN.



TREEFOLKS

STEP 3: PREPARING THE ROOT BALL & FILLING THE HOLE

Inspect the root ball for circling roots. Don't be afraid to handle the root ball! Straighten circling roots or cut them off.



CIRCLING ROOTS



Cut them before planting to ensure they don't strangle your tree over time.

Straighten the tree in the hole and then backfill with the original soil. Pack the soil around the tree as you fill the hole. Don't fertilize or add compost to the hole while planting!



Watering as you fill the hole also helps eliminate air pockets!

PRO TIP: YOU CAN USE ANY EXTRA SOIL TO BUILD A DAM AROUND YOUR TREE. A DAM WILL HELP HOLD WATER, ALLOWING IT TO SOAK DOWN INTO THE ROOTS.



TREEFOLKS

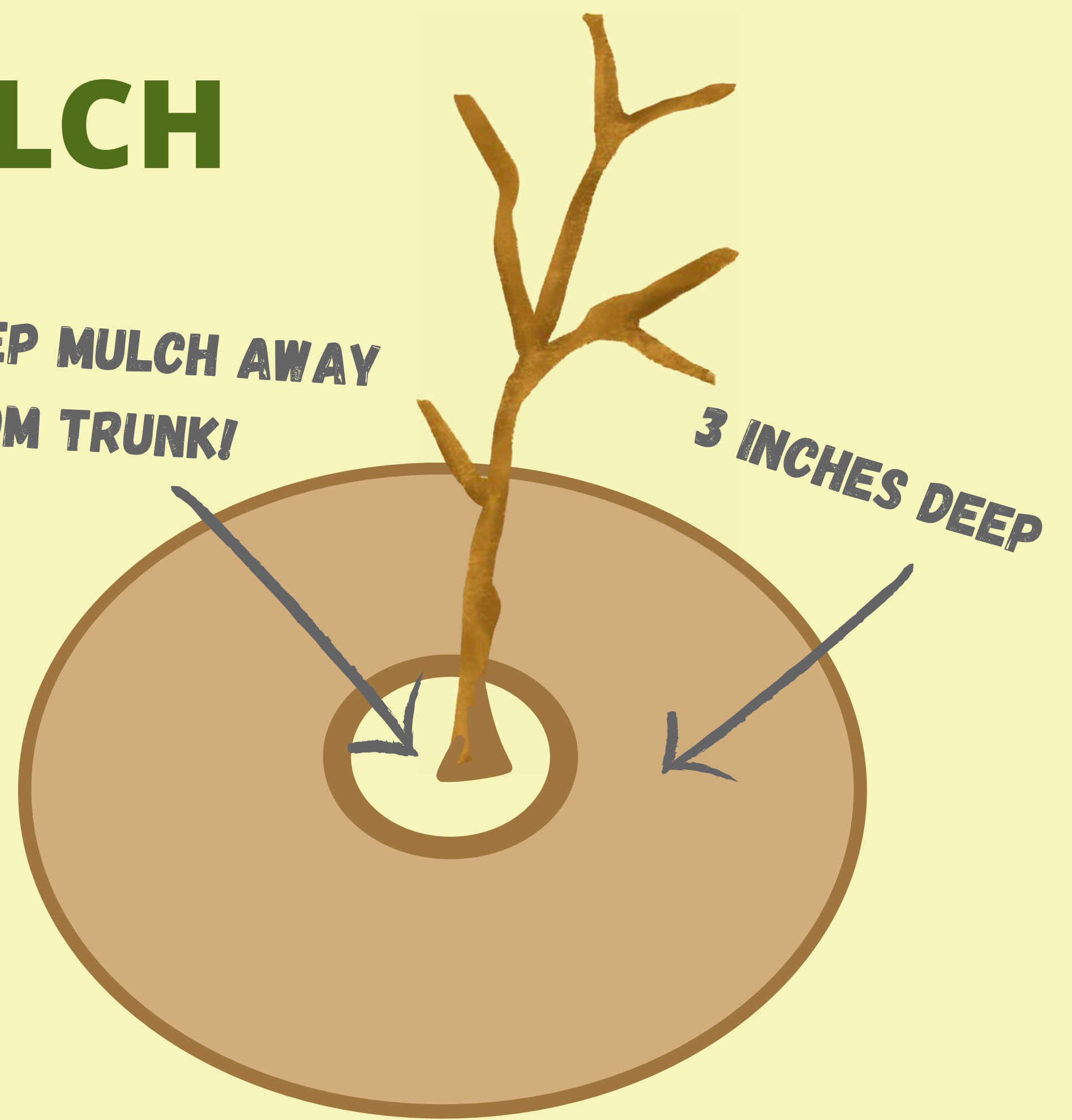
STEP 4: HOW TO MULCH YOUR NEW TREE

THE RIGHT WAY TO MULCH

Spread 3 inches of mulch around your tree, keeping mulch away from the tree trunk.

KEEP MULCH AWAY FROM TRUNK!

3 INCHES DEEP



THE WRONG WAY TO MULCH

No mulch volcanoes!

Keep mulch away from the trunk of the tree to avoid decay.

REMINDER: REMEMBER TO EXPOSE THE ROOT FLARE FOR A HAPPILY MULCHED TREE!



TREEFOLKS

STEP 5: WATERING YOUR NEW TREE

Water your tree when you plant it, and regularly for the next 3 years.

Newly planted trees, even native and drought tolerant ones, need 15–20 gallons of water every 7–10 days.

Short on time? Set your garden hose on low flow for 15 minutes at the base of your tree for slow and deep watering.



PRO TIP: WANT TO SPEND SOME QUALITY TIME WITH YOUR TREE? HAND WATER WHILE YOU MONITOR YOUR TREE FOR DISEASE AND INSECTS AND GET TO KNOW IT BETTER.



TREEFOLKS