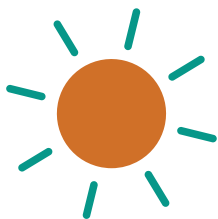


TREE PLANTING GUIDE

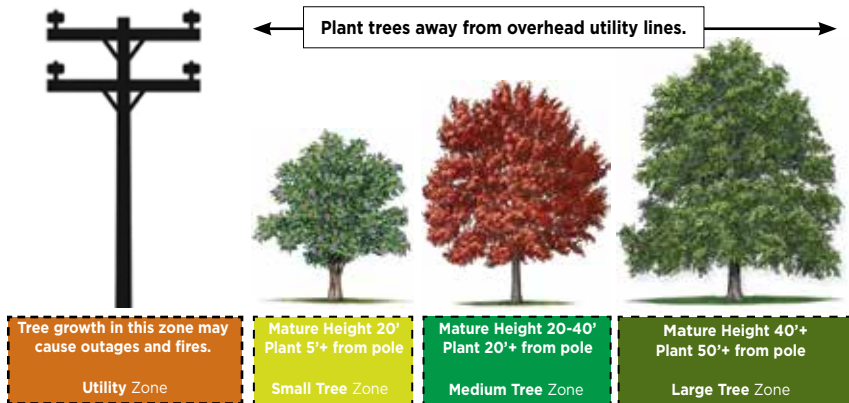
Planting Season is October through March • [Treefolks.org](https://www.treefolks.org)



LET'S GET STARTED!

RIGHT TREE RIGHT PLACE

1



2

Call 811 at least 3 days before you dig/plant your tree to have your underground utilities marked.



3

Lay your tree on the ground & gently slide it out of the container.
Loosen the soil & roots on the outside edge of the root ball.
Cut any circling roots with pruning shears or scissors.

4

Dig a shallow, broad planting hole. It should be 2-3 times wider than the root ball, but only as deep as the root ball.
Place the tree at the proper height.

DON'T FORGET!

Your tree needs 15-20 gallons of water a week for the first 2 years, especially during the summer. Leave a hose on a low stream for 15 minutes to equal 15-20 gallons of water.

Cover the entire loosened area of soil, including the soil dam, with 3-4" of mulch.

Ensure the root flare, where the trunk meets the roots, is visible after planting.

Backfill with the same soil tamping it down with your hand. While your tree adapts to its new home, avoid fertilizer. Extra soil should be placed in a ring 2-3 ft away from trunk.

6

7

8

Water your tree to settle the soil. Remove the stake & tape from your tree.

Step back & admire your work!



THANK YOU for adopting your tree.

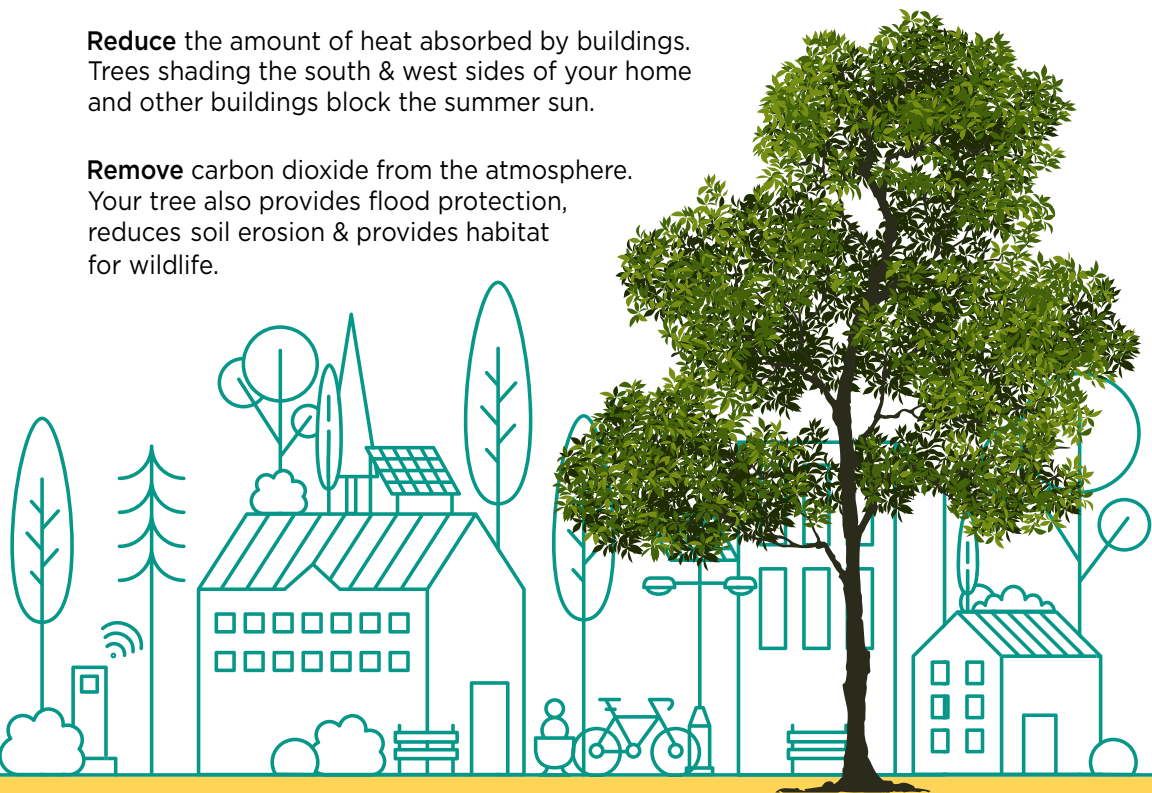
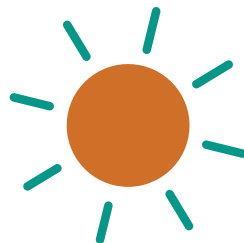
By planting your new tree you are helping to:

Reduce your neighborhood's daytime air temperature. Tree-shaded neighborhoods can be 3-6 degrees cooler!

Save up to 10% more electricity. Your air conditioning unit will work more efficiently when operating in an area shaded by trees.

Reduce the amount of heat absorbed by buildings. Trees shading the south & west sides of your home and other buildings block the summer sun.

Remove carbon dioxide from the atmosphere. Your tree also provides flood protection, reduces soil erosion & provides habitat for wildlife.



Paper is FSC-certified 100% recycled produced with wind-generated electricity.
Please recycle or pass to a neighbor or friend.